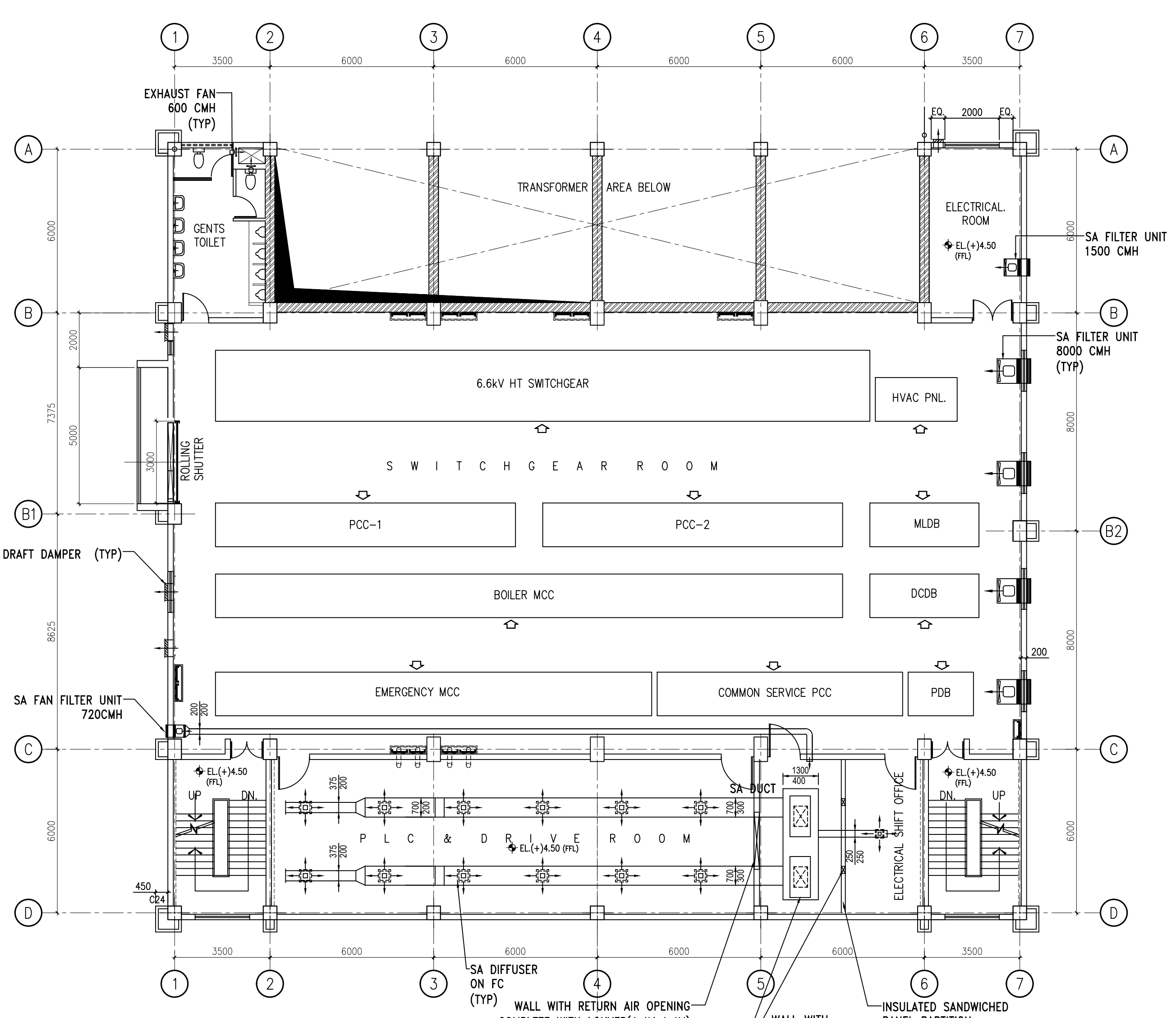
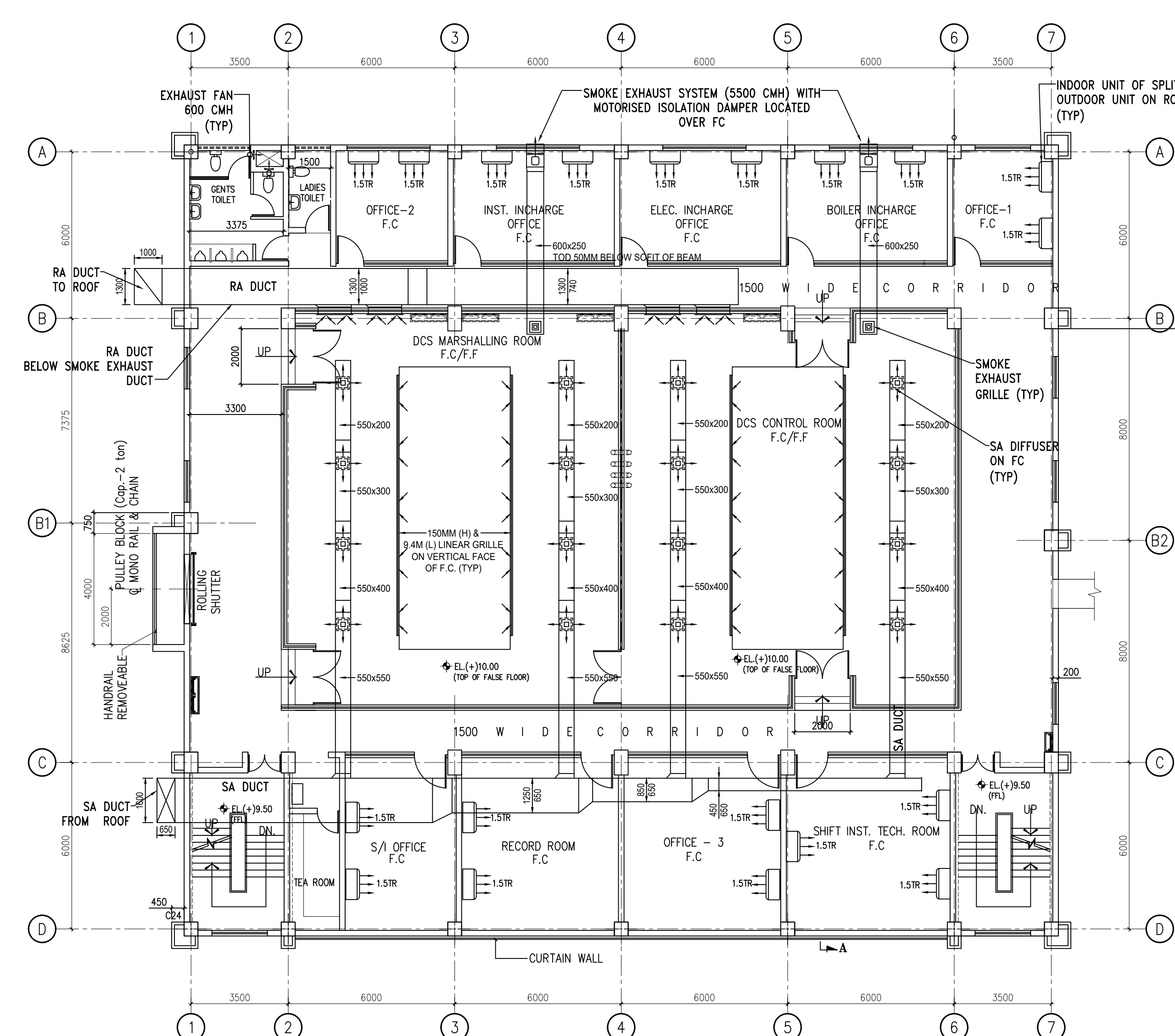


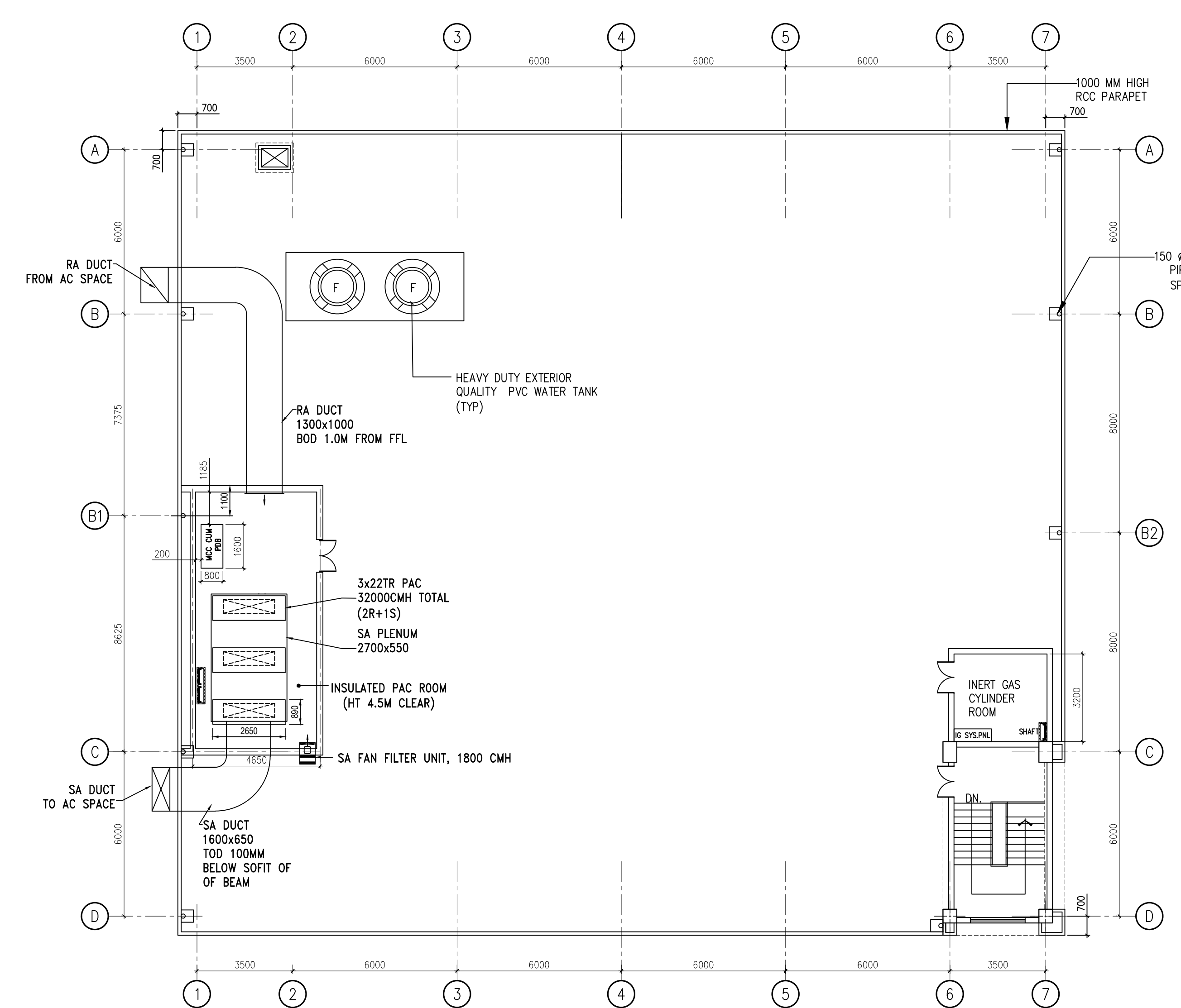
GROUND FLOOR PLAN  
EL. (+) 0.50



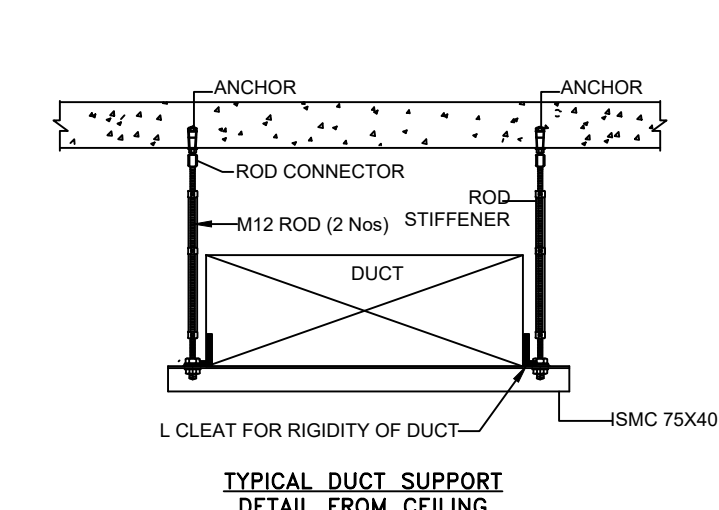
FIRST FLOOR PLAN



SECOND FLOOR PLAN  
EL. (+) 9.50 (FFL)



ROOF PLAN  
EL. (+) 15.00 (100)



- NOTES:
- ALL DIMENSIONS ARE IN MM UNLESS OTHERWISE STATED.
  - SA DUCT (~700x700) SHALL BE LAID ~2800 FROM FFL OF ROOF. SUITABLE SUPPORTS SHALL BE PLACED @ 2000 INTERVAL TO SUPPORT THE DUCT.
  - RA DUCT (~850x850) SHALL BE LAID ~1000 FROM FFL OF ROOF. SUITABLE SUPPORTS SHALL BE PLACED @ 2000 INTERVAL TO SUPPORT THE DUCT.
  - ALL DUCTS LOCATED AT 1ST & 2ND FLOOR SHALL BE PLACED ABOVE FALSE CEILING.
  - REFER DWG. NO. 18A08-DWG-E-0401 FALSE CEILING.

ISSUED FOR CONSTRUCTION

OWNER:	IFFCO PARADEEP
PROJECT:	IFFCO PARADEEP AFBC BOILER CONTROL ROOM
TITLE:	CONTROL BUILDING HVAC LAYOUT

DEVELOPMENT CONSULTANTS PVT LTD. CONSULTING ENGINEERS KOLKATA - MUMBAI - CHENNAI - NEW DELHI	JOB NO. 18A08 SCALE 1:125 DATE 22.02.19
PREPARED BY: SD	CHECKED BY: SK
APPROVED BY: SK	DWG. NO. 18A08-03-DWG-VA-001

APPROV.	MECH.	INST.	ELEC.	STR.	ARCH.	NATURE OF REVISION & DESCRIPTION	CHECKED	DRAWN	REV.	DATE